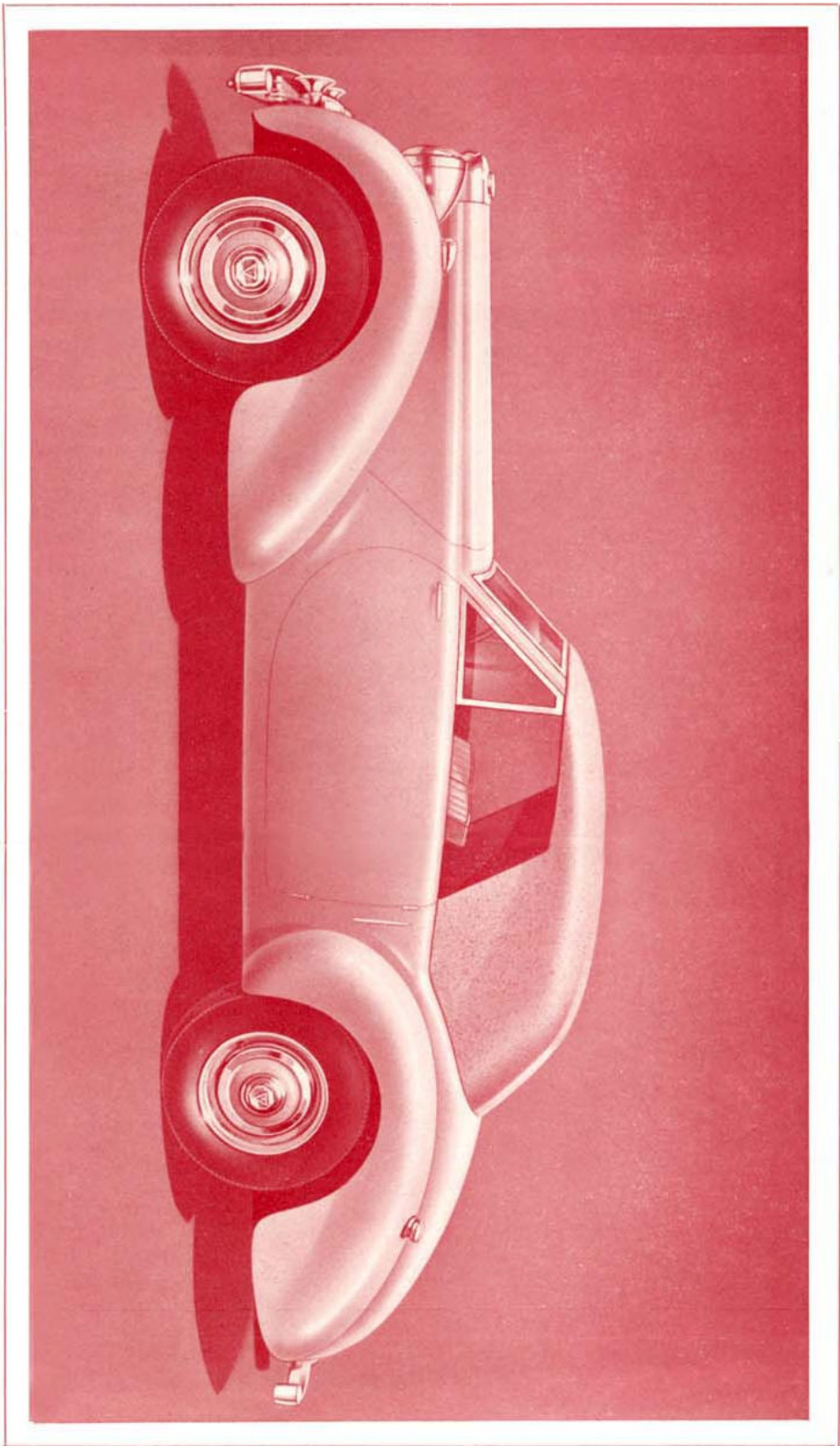


*14 H.P.*

*ALVIS-DUNCAN*

*Drop Head Coupe*

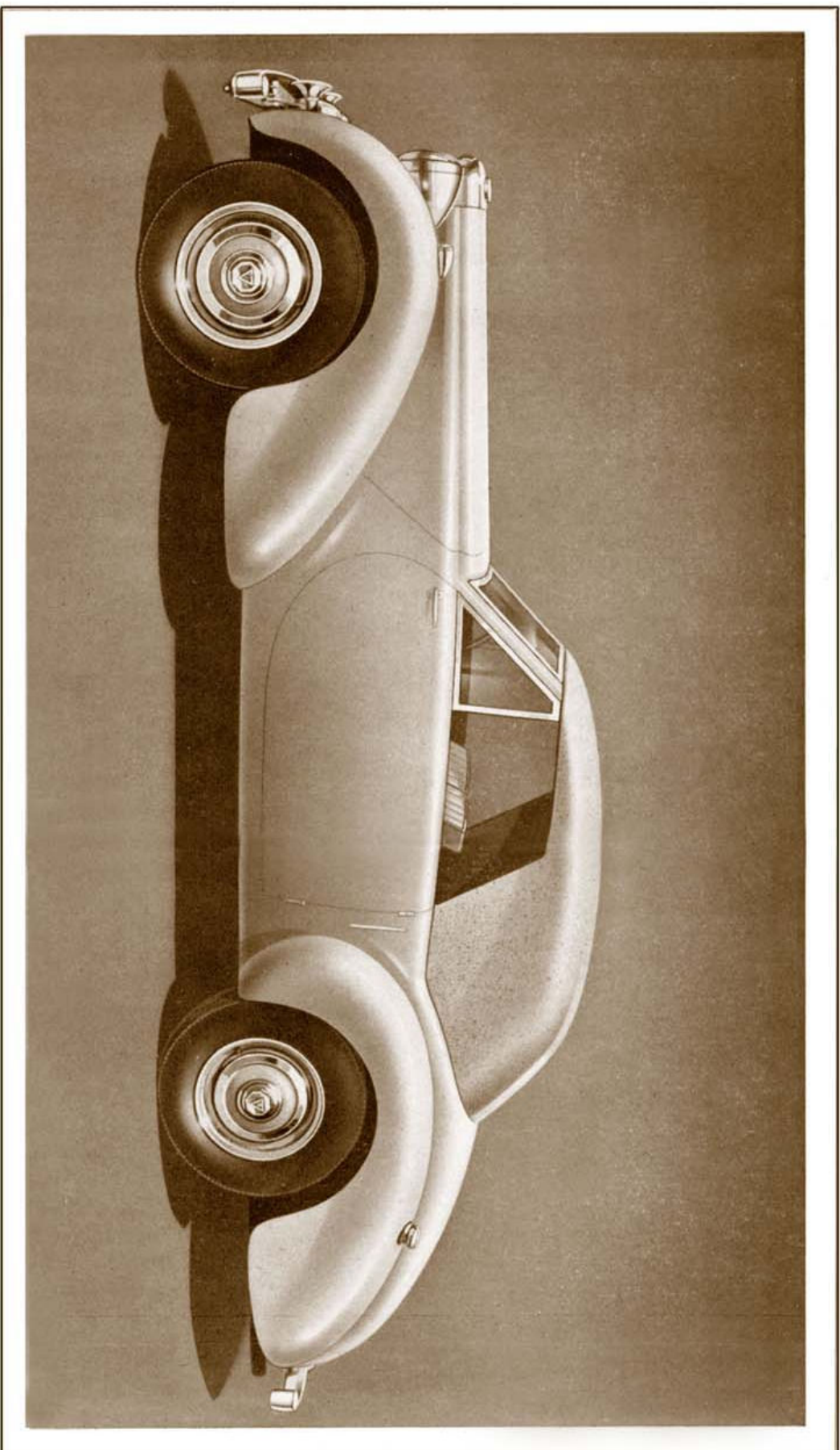


*Coachwork by Duncan Industries (Engineers) Limited, Swannington Aerodrome, Haverlingland,  
Near Norwich, Norfolk, England*

14 H.P.

ALVIS-DUNCAN

Drop Head Coupe

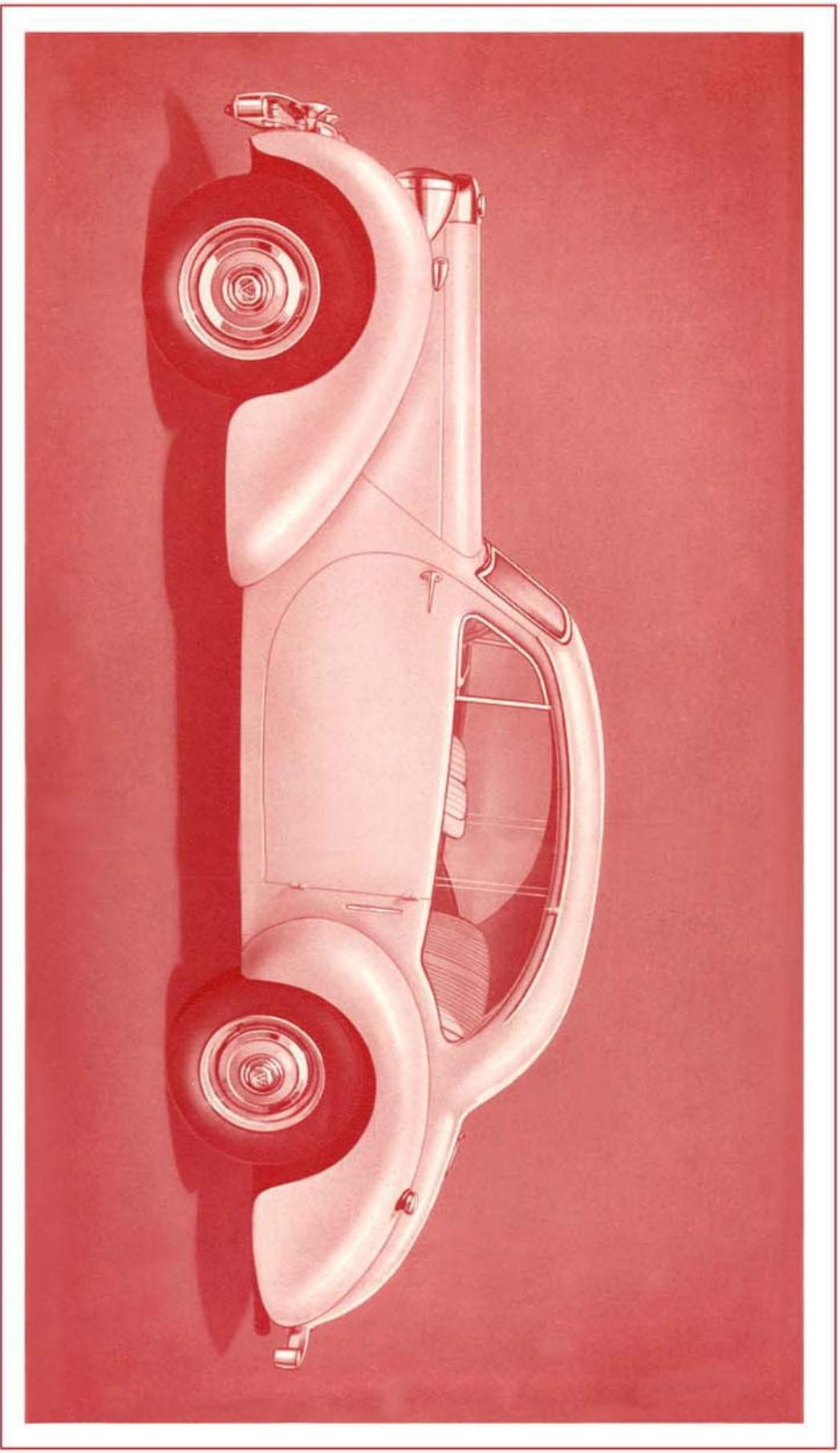


*Coachwork by Duncan Industries (Engineers) Limited, Swainington Aerodrome, Haverlingland,  
Near Norwich, Norfolk, England*

14 H.P.

ALVIS-DUNCAN

Saloon

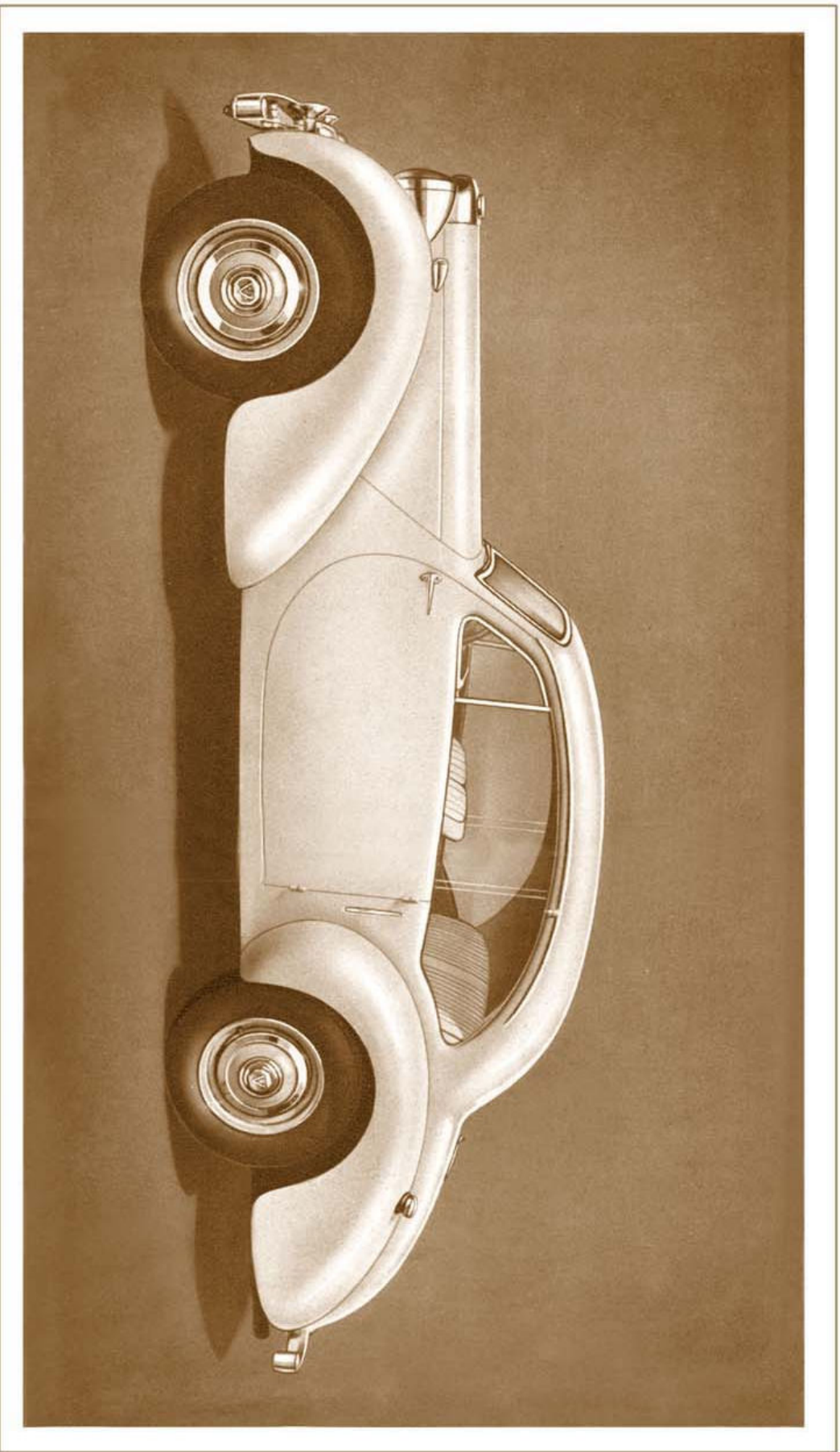


*Coachwork by Duncan Industries (Engineers) Limited, Park Hall, North Walsham, Norfolk, England*

14 H.P.

ALVIS-DUNCAN

Saloon



*Coachwork by Duncan Industries (Engineers) Limited, Park Hall, North Walsham, Norfolk, England*

---

# 14 H.P. ALVIS-DUNNAN D.H. COUPE

## BRIEF SPECIFICATION

---

The Duncan body is exceptionally light and gives an outstanding performance to the 14 H.P. Alvis. The weight distribution is such that the handling qualities of the car are extremely good. The combination of the Duncan body and the Alvis chassis provides standards of silence and performance which can only be obtained normally in much larger cars.

The coachwork is constructed of seasoned ash with rigid steel reinforcements for the windscreen and door pillars. Panelling is in high tensile aluminium alloy.

Although the car is described as a sports coupe, seating comfort and visibility have been specially studied.

The roomy luggage boot also houses the spare wheel in an accessible position.

The front seats are adjustable for legroom. The car is luxuriously upholstered and covered in one of the new plastic materials in green, brown or beige. External colour is to choice.

Considerable attention has been given to soundproofing, and thick underfelt is used under the carpets. All cabinet work and fittings are of the best quality.

No draught, ventilating panes are fitted in conjunction with winding windows.

The head folds substantially flush when not in use and is covered in this position by a neat cover. Head is released from screen by a single central handle. All head fittings are of best quality.

Provision is made for the fitting of a Clayton car heater and Ekco radio.

**The Company reserves the right to alter this specification without previous notice.**

---